



Gifted and Talented Program



Dr. Sabrina Early
GT Coordinator



What does Gifted & Talented mean?

The state of Texas defines a gifted student as a child or youth who performs at or shows the potential for performing at a remarkably high level of accomplishment when compared to others of the same age, experience or environment. These students:

- Show high-performance capabilities in an intellectual, creative or artistic area
- Possess an unusual capacity for leadership
- Excel in a specific academic field



”
Who do we serve?
Grades
Kinder (starting March 1st
once identified)
through 12th.
“

<https://en.wikipedia.org/wiki/Coal>

REFERRAL



WHO CAN REFER?

- Parent/Guardian
- Teacher
- Community Member



HOW CAN I REFER?

Use the following link for a paper copy, scan the QR Code, or use the link to the Google form, or you may pick up a paper referral form from any campus office or print from the link below.

[RCISD GT-Referral-Form Aug 2024](#)

Gifted and Talented Referral Link for Google:

- <https://forms.gle/2L7P9ZmXTCHEXO4E9>



Scan Me



WHEN CAN I REFER?

You can refer a student at any time throughout the year.



WHEN WILL THE WINDOW FOR REFERRALS CLOSE?

The window for testing during the current school year will close on January 31, 2025. Any referrals received after this date will be reserved for testing the following school year.

WHAT IS THE

Testing Process like?



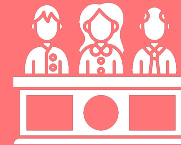
PERMISSION

Parent/guardian permission needs to be obtained before testing begins.



ASSESSMENT

A student profile is used to identify and reflect a minimum of three (3) criteria used in the assessment. The criteria used will be a combination of qualitative and quantitative instruments



COMMITTEE

A committee reviews the student profile using a blind (no name process). Based on the data presented, the committee uses a rubric to determine each student's qualifications and a decision is made.



NOTIFICATION

The parent/guardian is then notified of the committee's decision. If the student qualifies, then written permission needs to be obtained before services may begin.

What are the criteria used in the assessment?

A student profile is used to identify and reflect a minimum of three (3) criteria used in the assessment. The criteria used will be a combination of qualitative and quantitative instruments and may include:

- Achievement Test such as the **IOWA Test** or other achievement tests as deemed appropriate for the student;
- School Abilities Test such as the Naglieri Nonverbal Ability Test (**NNAT3**), The Cognitive Abilities Test (**CogAT**), or other school abilities tests as deemed appropriate for the student;
- Divergent Thinking Assessment such as the **Torrance Test** of Creative Thinking, the Creative Assessment Packet (CAP), or other divergent thinking assessment as deemed appropriate for the student;
- Teacher/Parent Rating - Scales for Identifying Gifted/Talented Students (SIGS), the Renzulli-Hartman Teacher Rating Scales, the Slocumb-Payne Perception Inventories, or other rating scales as deemed appropriate for the student

Committee



Through a blind process (no names), the committee members review each nominated student's profile. The same rubric is used for each profile to determine their qualifications.





Based on the individual student's data and the guidance of the Gifted and Talented Handbook, a decision is made for each nominee.

Parents/guardians are then notified of the committee's decision.

Notification



Additional Resources

Roscoe CISD Gifted and Talented Handbook

<https://www.roscoe.esc14.net/page/open/1066/0/2024-2025%20GT%20Handbook.docx.pdf>

Texas State Plan for Gifted and Talented

<https://tea.texas.gov/academics/special-student-populations/gifted-and-talented-education/v2-gt-state-plan-2024.pdf> English

<https://tea.texas.gov/academics/special-student-populations/gifted-and-talented-education/v2-gt-state-plan-2024-spanish.pdf> Spanish



Thank you!

Dr. Sabrina Early
GT Coordinator
325-766-3327 Ext. 202
searly@roscoe.escl4.net