



# September 2022

## Roscoe Elementary | MENU

**Breakfast  
FREE**  
for all grades!  
\$3.00 for  
adult/staff

Lunch  
is \$2.40 for  
students  
\$4.50 for  
adults/staff

Powering  
potential.

| MON  | TUES  | WED  | THURS  | FRI   |
|--|---|--|--|---|
|  |   |  | Cheesy omelet <sup>1</sup>   | Muffin/side <sup>2</sup>  |
|  |   |  | Country fried steak<br>Chili-cheese potato <sup>8</sup>  | Fish bites<br>Pizza <sup>9</sup>  |
| Labor day <sup>5</sup><br>No<br>School!  | Breakfast pizza <sup>6</sup><br>Mashed potato bowl<br>Grilled cheese                                    | Maple pancakes <sup>7</sup><br>Spaghetti/garlic toast<br>Chicken Drumstick                             | Egg/cheese biscuit <sup>8</sup><br>Yogurt parfait<br>Country fried steak<br>Popcorn chicken/roll <sup>15</sup> | Cherry frudel <sup>9</sup><br>Pancakes/syrup<br>Beef quesadilla<br>Cheese pizza <sup>16</sup> |
| Breakfast round <sup>12</sup><br>Sausage kolache<br>Fish bites<br>Chicken sandwich <sup>19</sup> | Muffin/side <sup>13</sup><br>Yogurt parfait<br>Chicken nuggets/roll<br>Mashed potato bowl <sup>20</sup> | Cheesy omelet <sup>14</sup><br>Yogurt/side<br>Breakfast for lunch<br>Ham/cheese melt <sup>21</sup>     | Bagel/cream cheese <sup>15</sup><br>Yogurt parfait<br>Salisbury steak<br>Chicken quesadilla <sup>22</sup>      | Mapel waffle <sup>16</sup><br>Chicken biscuit<br>Turkey sub<br>Pepperoni pizza <sup>23</sup>  |
| Pancake wrap <sup>19</sup><br>Choc. crescent roll<br>Hamburger<br>Corndog <sup>26</sup>          | Waffle/syrup <sup>20</sup><br>Yogurt parfait<br>Chicken alfredo<br>Chicken tenders/roll <sup>27</sup>   | Mini bagel <sup>21</sup><br>Cheesy omelet<br>Cheese quesadilla<br>Chicken drumstick/roll <sup>28</sup> | Cereal <sup>22</sup><br>Biscuits/gravy<br>Yogurt parfait<br>Popcorn chicken/roll<br>Baked potato <sup>29</sup> | Apple frudel <sup>23</sup><br>Breakfast pizza<br>Cheese pizza<br>Meatball-sub <sup>30</sup>   |
| Egg/cheese biscuit <sup>26</sup><br>Poptart/side<br>Country fried steak<br>Fish bites            | Cereal <sup>27</sup><br>Cinnamon roll<br>Yogurt parfait<br>Chicken nugget/roll<br>BBQ rib-sandwich      | Cheesy omelet <sup>28</sup><br>Pancakes<br>Breakfast for lunch<br>hotdog                               | Sausage kolaches <sup>29</sup><br>Yogurt parfait<br>Spaghetti meatballs<br>Popcorn chicken salad               | Donut holes <sup>30</sup><br>Yogurt/side<br>Pepperoni pizza<br>Ham/cheese melt                |

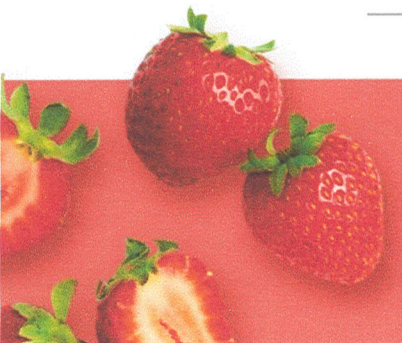
**Menus are subject to change.**

Choice of cereal available at breakfast.  
Highlighted menu items = Montessori meals

All Lunches Must  
Include Choice of:  
Fruits and/or  
Vegetable  
And May Include:  
1% Low-Fat Milk



This institution is an equal  
opportunity providers





# September 2022

## Roscoe JH/HS | MENU



Breakfast  
is FREE for  
all Grades!  
\$3.00  
for Adult/Staff

Lunch is  
\$2.40 for  
Students  
\$4.50 for  
Adults/Staff

Powering  
potential.

| MON  | TUES   | WED   | THURS  | FRI   |
|--|--|---|--|---|
|  |  |   | Sausage Kolache <sup>1</sup><br>Top n go nachos<br>Baked potato bar                          | Chicken Biscuit <sup>2</sup><br>Mashed potato bowl<br>Popcorn chicken bar               |
| <sup>5</sup><br><b>Labor Day</b><br><b>No School</b>                                   | <sup>6</sup><br>Mini cinnamon roll<br>Chili cheese dog<br>Pizza bar                          | <sup>7</sup><br>Cheesy egg scramble<br>Chicken nugget/roll<br>Grill bar               | <sup>8</sup><br>Egg/cheese biscuit<br>Yogurt/side<br>Popcorn chicken/roll<br>Nacho Bar       | <sup>9</sup><br>Pancake wrap<br>Cherry frudel<br>Beef quesadilla<br>Pizza Bar           |
| <sup>12</sup><br>Sausage Kolache<br>Waffle/syrup<br>Chicken Sandwich<br>Grill Bar      | <sup>13</sup><br>Egg/cheese biscuit<br>Mini pancakes<br>Mashed potato bowl<br>Nacho/taco bar | <sup>14</sup><br>Breakfast Pizza<br>Cinnamon bun<br>Max Sticks<br>Popcorn chicken bar | <sup>15</sup><br>Poptart/side<br>Cheesy omelet<br>Salisbury steak<br>Nacho/taco bar          | <sup>16</sup><br>Sausage biscuit<br>Donut holes<br>Grilled Cheese<br>Pizza Bar          |
| <sup>19</sup><br>Breakfast burrito<br>Bagel/cream cheese<br>Meatball sub<br>Grill bar  | <sup>20</sup><br>Pancake Wrap<br>Cherry Frudel<br>Chicken tenders<br>Nacho/taco bar          | <sup>21</sup><br>Biscuits/gravy<br>Yogurt/side<br>Baked potato<br>Popcorn chicken bar | <sup>22</sup><br>Egg/cheese biscuit<br>Muffin/side<br>Popcorn chicken/roll<br>Nacho/taco bar | <sup>23</sup><br>Breakfast sandwich<br>Mini pancakes<br>Corn dog<br>Pizza Bar           |
| <sup>26</sup><br>Egg/Cheese biscuit<br>Donut holes<br>Country fried steak<br>Grill bar | <sup>27</sup><br>Cinnamon roll<br>Cheesy omelet<br>Fish/ mac n cheese<br>Nacho/taco bar      | <sup>28</sup><br>Sausage biscuit<br>Mini bagel<br>Calzone<br>Popcorn chicken bar      | <sup>29</sup><br>Sausage kolache<br>Muffin/side<br>Spaghetti/meatballs<br>Nacho/taco bar     | <sup>30</sup><br>Breakfast pizza<br>French toast sticks<br>Ham/cheese melt<br>Pizza bar |

Menus are subject to change.

\*Variety of cereal available at breakfast  
\*ala carte items available daily at lunch  
Students may not charge for extra entrees or  
Ala carte items.

All Lunches Must  
Include Choice of:  
Fruits and/or  
Vegetable  
And May Include:  
1% Low-Fat Milk



This institution is an equal  
opportunity providers

